



Smooth Glossy White Auto Paint , Durable Acrylic Automotive Spray Paint

Our Product Introduction

Basic Information

- Place of Origin: China
- Brand Name: PORSHICHE
- Certification: iso9000
- Model Number: P-101
- Minimum Order Quantity: 200L
- Price: 2.7/LUSD-24.27/LUSD
- Packaging Details: carton
- Delivery Time: 10-15 Work Day
- Payment Terms: T/T
- Supply Ability: 200Lper day

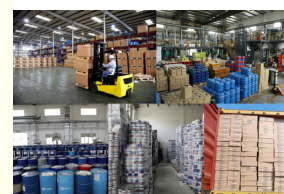
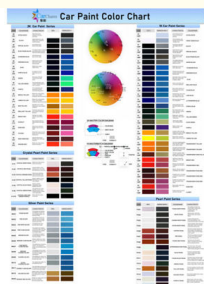
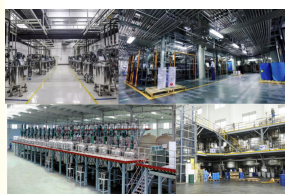


Product Specification

- Product Name: P-101 High Density Extra White
- Application: Car
- Shelf Life: 1-3 Years
- Requirement: Dry Naturally
- Color: White
- Coverage: 400 Sq. Ft./gal.
- Specific Gravity: 1.2KG
- Size: 1L
- Highlight: 1k basecoat car paint, 1k basecoat car paint, single stage acrylic paint



More Images



for more products please visit us on refinishcarpaint.com

Product Description

1K High Density Extra White Auto Paint Smooth And Glossy

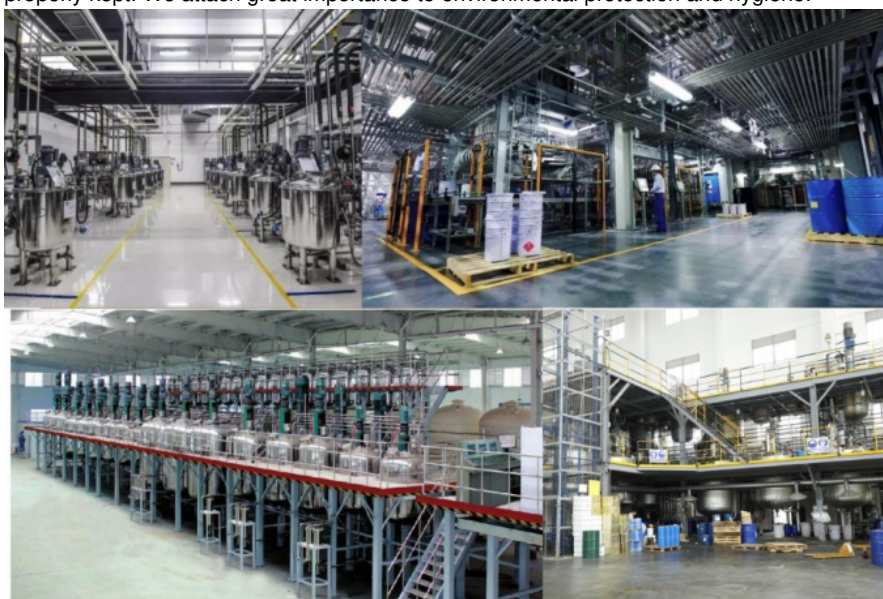
Manufacturer Introduction:

We are a car paint manufacturer located in Guangzhou. We have been deeply involved in this field for 20 years, producing 1K, 2K color paint, varnish, clear coat, hardener, thinner, putty, body filler, etc.

Our factory covers an area of 3,000 square meters and has advanced facilities and a reasonable layout. Among them, 3 laboratories are equipped with cutting-edge experimental equipment, providing strong technical support for product research and development and quality inspection.



The production workshop adopts modern production processes and procedures, and operates efficiently and orderly. The warehouse is well-equipped and has excellent storage conditions to ensure that both raw materials and finished products are properly kept. We attach great importance to environmental protection and hygiene.



The entire factory environment is clean and tidy, meets environmental protection standards, and is committed to achieving green production. We are extremely strict in controlling product quality. Each product must undergo multiple quality tests to ensure its excellent performance, stability and reliability. With high-quality products and good services, our sales network covers countries all over the world.



Whether it is the European and American markets, or Asia, Africa and other places, our car paint products are loved by customers and have received rave reviews from all over the world. Customers praise our products for their bright and long-lasting colors, strong weather resistance, and ability to maintain a good appearance in various harsh environments; the products have excellent leveling properties, are easy to apply, and can provide a smooth and flat paint surface for the car; and our products have good adhesion and hardness, which can effectively protect the car surface.



In the future, we will continue to uphold the attitude of excellence, continue to innovate and improve, and provide better quality automotive paint products to global customers.

Product Description:

Super White High-quality car refinish paint, presenting a pure, bright white color, this paint is designed to provide excellent coverage, durability and a smooth surface.

Excellent Coverage:

This paint is formulated with high-quality pigments and binders to ensure excellent coverage on a variety of surfaces, including metal, plastic and fiberglass. It helps hide flaws and provide a consistent, uniform surface.

Durability and Service Life:

Super White Car Refinish Paint has good weather resistance, can resist the erosion of natural factors such as sunlight, rain, temperature changes, and maintain color and gloss for a long time;

It has good chemical resistance and has certain resistance to acids, alkalis, water and alcohol;

It has a high hardness and provides certain resistance to scratches and abrasion;

It has strong adhesion and can firmly adhere to the surface of the car. It has anti-fading, anti-chipping and anti-weathering properties. It can help maintain a bright white color even in harsh environmental conditions.

Smooth and Glossy Surface, this paint is designed to provide a smooth and glossy surface, enhancing the overall appearance of the vehicle. It provides a reflective surface, adding depth and gloss to your car paint.

Instructions:

1K 101 High Density Extre White + Thinner, then spray,dry naturally, after the paint film is dry, it must be sprayed with varnish for protection 1K paintUsually the ratio is 1:1, the silver powder is 1:1 and the semi-wet spray is sprayed on both sides after the cover is dead, and other ratios can be more than 1:1.

Advantages of Meklon products:

Good coating adhesion, good weather resistance, smooth and even, silver powder or pearlescent arrangement is uniform and clear; excellent gloss and reflectivity after matching with varnish/clear coating.



1K 101P

High Density Extra White

Product Features

- Standard white, good hiding power, used for toning and individual spraying



Customer feedback after use:

"I am the owner of an auto repair shop and have been looking for a high-quality car paint. Since using your product, I am very satisfied with both the color matching and the quality of the paint. When the customer came to pick up the car, he praised the repaired effect, all thanks to your excellent car paint!"

"As a car modification enthusiast, I have extremely high requirements for car paint. Your car paint is not only bright and long-lasting in color, but also has excellent leveling during construction, which makes my car look brand new and becomes the focus of the road. Thank you very much for providing such an excellent product!"

"Our auto manufacturer has been looking for a reliable auto paint supplier. After cooperating with you, the problem was solved. Your auto paint has stable quality and a long shelf life, which greatly reduces our production costs and quality risks. Looking forward to a longer cooperation with you!"



Guangzhou Meklon Chemical Technology Co., Ltd.



+8613392100968



Meklonpaint@gzmeklon.com



refinishcarpaint.com

Room 1309, Tower B, Jiada International, Guangyun Road, Baiyun District, Guangzhou City, Guangdong Province