



## Nontoxic Car Polyester Putty Filler Mildewproof Alkali Resistant

Our Product Introduction

for more products please visit us on [refinishcarpaint.com](http://refinishcarpaint.com)

### Basic Information

- Place of Origin: China
- Brand Name: Meklon
- Certification: ISO,MSDS,SGS
- Model Number: 550R
- Minimum Order Quantity: 100Boxes
- Price: 8.05USD-16.23USD Per Box
- Packaging Details: Carton
- Delivery Time: 10-15 Work Day
- Payment Terms: T/T
- Supply Ability: 500 boxes per day



### Product Specification

- Application: Various
- Color: Gray
- Country Of Origin: China
- Drying Time: 15 Minutes
- Packaging: Can
- Shelf Life: 2 Years
- Type: Putty
- Weight: 3.6KG
- Highlight: clear over base paint, car body primer paint, clear coat after paint



### More Images



## Product Description

### Meklon 2-Component Fiber Gray Car Putty Repair Super Strong Adhesion

Product name:	fiber gray	Product packaging:	4 cans in a box
Use ratio:	100 grams of ash: 2 grams of hardener	Application:	car furniture putty repair
Product features:	Alloy fiber ash is specially designed for the automotive repair market to repair deep pits on the surface of all automotive alloy substrates, filling and repairing.		
Applicable substrates:	iron plates, aluminum, glass fiber reinforced plastics, welds and old paint layers, and deep pits and holes on the surface of general plastic parts.		

#### Commodity features:

Two-component polycool aluminum alloy ash, super strong direct adhesion on the surface of metal workpieces: it is used for filling minor scratches or serious depressions on the body; it can be directly applied to bare iron, alloy glass steel, wood, plastic, ceramics, plastic and On the original paint film; durable, strong adhesion, high filling, easy to polish, and can withstand high temperatures of 180°C.

Applicable substrate:

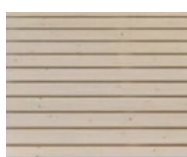
It is suitable for thoroughly grinding and cleaning iron plates, steel plates, alloys, stainless steel, FRP furniture, automotive plastic parts, ceramics and other completely dry old paint surfaces (except thermoplastic acrylic resin), mid-way primer surfaces, putty and other workpiece surfaces.

Construction method:	Thoroughly clean and sand the application surface, use scraper and scraper to apply
The mixing ratio :	100 fiber ash: 2 special curing agent (weight ratio) (product density is 1L: 1.85KG)
Drying time :	10-15 minutes at 20°C
Precautions:	1. Avoid excessive use of curing agent

#### Strong adhesion and suitable substrate factory



Car body



Wood caulking



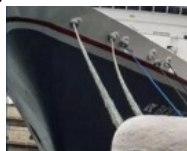
Construction machinery manufacturing



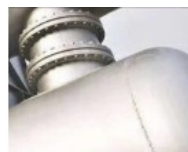
Aircraft touch-up paint



Layer of the operating



Ship repair



Industrial Machine repair



Furniture repair



Ceramic crafts



Quality Assurance



100% actual photos



7 days no reason to return



Delivery time: Delivery within 10-15 days after the payment is completed.



Delivery express:by sea;container/bulk.



Receipt Reminder:The container has special logistics information, and the information of the bill of lading container can be directly queried.

Arrange transportation to your designated agent after the meeting ends, and give you a warehouse recycling list.



**Guangzhou Meklon Chemical Technology Co., Ltd.**



+8613392100968



Meklonpaint@gzmeklon.com



refinishcarpaint.com

Room 1309, Tower B, Jiada International, Guangyun Road, Baiyun District, Guangzhou City, Guangdong Province