



Waterproof Nontoxic Rose Red Car Paint , Glossy Automotive Refinishing Products

Our Product Introduction

for more products please visit us on refinishcarpaint.com

Basic Information

- Place of Origin: China
- Brand Name: Meklon
- Certification: ISO,MSDS,SGS
- Model Number: P-220
- Minimum Order Quantity: 200L
- Price: 4.64/LUSD-6.92/LUSD
- Packaging Details: Carton
- Delivery Time: 10-15 Work Day
- Payment Terms: T/T
- Supply Ability: 500L per day



Product Specification

- Brand: PORSHICHE
- Coverage: 10m2/L
- Drying Conditions: Dry/Clean
- Drying Time: 2 Hours
- Type: Refinish Car Paint
- Recoat Time: 2 Hours
- Shelf Life: 2 Years
- State: Liquid
- Highlight: **Waterproof Rose Red Car Paint, car paint damage repair, Glossy Automotive Refinishing Products**



More Images



Product Description

Meklon Rose Red Car Paint High Gloss Even Hot Selling Customized

product description:

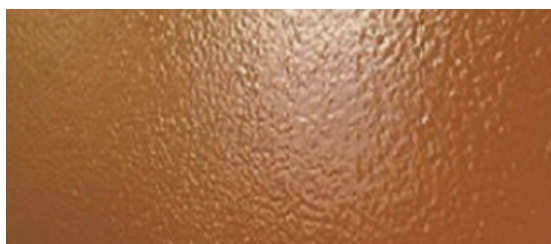
The smaller particle size of rose red car paint makes the paint look smoother and more even. The fine particle size helps to improve the appearance texture and fineness of car paint. The degree of sparkle of rose red car paint can vary depending on different paint treatments and coating processes. Typically, it exhibits a moderate shimmer effect, giving the car a subtle glow in the sun. This flashing effect can add to a car's visual appeal and uniqueness.

Rose red car paint usually has good gloss, giving the car a smooth, bright appearance. Gloss is achieved through the coating and polishing of the paint surface, which determines the reflective ability and appearance texture of the car paint. Proper gloss can add depth and fullness to rose red car paint.

Product Name:	Rose Red	Specifications	1LX12/4LX4/5LX4
Net Weight:	0.95KG/3.6KG/4.6KG	Use:	Spary/Roll/Rush
Scope of application::	Cars, trucks, ships, airplanes	Price:	Good
Quality:	Good	Transportation:	By sea

Frequently Asked Questions and Analysis and Solutions:

Phenomenon 1: Orange peel, orange peel



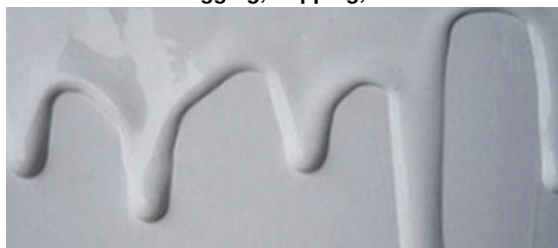
When spraying, wrinkles similar to orange peel or grapefruit peel appear on the surface of the coating film. This is mainly caused by the fact that when the atomized fine paint particles reach the paint surface, they cannot flow with each other and are poorly combined. Supplementary teaching method: After the paint surface is completely dry, use ultra-fine sandpaper or coarse wax to remove the orange peel depending on the severity of the orange peel wrinkles. If the situation is serious, use sandpaper to smooth it before re-spraying.

Phenomenon 2: Shrinkage holes and fish eyes:



The surface of the object to be coated has not been cleaned and exists, or due to the influence of foreign matter (such as oil, water, silicon steel, boron, etc.) mixed into the paint, the paint cannot adhere evenly and shrinks to expose the coated surface, or the primer is not treated properly. The phenomenon of uneven paint caused by the presence of tiny blisters is called shrinkage cavity coating film problem. Remedy: If the shrinkage cavity is not serious, you can spray two more coats to add anti-cavities when the paint surface has just reached its normal evaporation time. If the paint is caused by beads of water, if the situation is serious, the affected area should be cleaned and then repainted.

Phenomenon 3: sagging, dripping, vertical flow:



During the spraying and drying process, on vertical or inclined surfaces, the coating film forms flow marks from top to bottom or thickening of the lower edge. Supplementary teaching method: After the paint layer is completely dry, sand and polish the sagging area with ultra-fine sandpaper, or smooth it with fine sandpaper before re-spraying.

Phenomenon 4: Blistering and itching:



During the coating process, bubbles may appear on the surface of the coating film or bubbles may appear in the coating film. Remedy: Sand the coating until all solvent bubbles are removed, then spray again.

How to operate:

2K rose red masterbatch needs to be used with hardener in a ratio of 2:1, and stir evenly. Please use clean water before spraying, do not use cleaning agents containing active agents, and keep the surface smooth. Allow the paint film to dry for 15 minutes, then apply the next coat 2-3 times normally after it is fully dry.

Company Profile:

GuangZhou Meklon Technology Co., Ltd., established in 2015, is a modern technology enterprise specializing in the research and development, production, sales, import and export trade of automotive paint (color paint, clearcoat varnish hardener thinner) and industrial paint. The company's products include: automobile baking paint, machinery equipment paint, and other industrial coatings. Among them, Meklon brand automotive paint is widely used in automobile 4S shops such as GM, Honda, Toyota, Audi, Nissan, Chery, Hyundai, etc. for maintenance paint. With the concept of good quality and stable development, the company works with you to establish the overall image of the industry brand. Industry mainstream.

product photo:





Guangzhou Meklon Chemical Technology Co., Ltd.



+8613392100968



Meklonpaint@gzmeklon.com



refinishcarpaint.com

Room 1309, Tower B, Jiada International, Guangyun Road, Baiyun District, Guangzhou City, Guangdong Province