



## Big Bright Red Car Paint Top Coat Supplier

Our Product Introduction

for more products please visit us on [refinishcarpaint.com](http://refinishcarpaint.com)

### Basic Information

- Place of Origin: China
- Brand Name: Meklon
- Certification: ISO,MSDS,SGS
- Model Number: P-218
- Minimum Order Quantity: 200L
- Price: 4.64USD/L-6.92USD/L
- Packaging Details: Carton
- Delivery Time: 10-15 Work Day
- Payment Terms: T/T
- Supply Ability: 500L per day

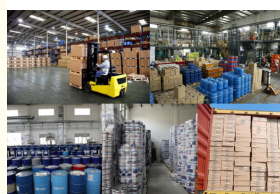
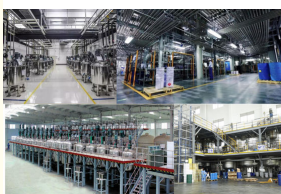


### Product Specification

- Brand: PORSHICHE
- Name: Scarlet
- Cleanup: Soap And Water
- Coverage: 400 Sq. Ft. Per Gallon
- Finish: Glossy
- Indoor/Outdoor: Indoor And Outdoor
- Number Of Coats: 2
- Surface: Wood, Metal, Masonry, And More
- UV Resistant: Yes
- VOC Level: Low
- Highlight: Smooth Car Paint Top Coat, top coat paint for cars, automotive top coat paint



### More Images



## Product Description

### Big Bright Red Car Paint Top Coat Supplier

#### Product Description:

Maroon car paint is a deep red hue that is similar to the color of dates. It is weather-resistant and durable, resisting everyday scratches, stains and UV radiation. Maroon car paint should also have good adhesion and uniformity to ensure overall coating quality and consistency.

After proper coating and polishing treatment, Meklon automotive paint can give the maroon paint a smooth and bright effect, reflecting rich light and enhancing the texture and appeal of the appearance. Gloss can also be affected by paint maintenance, polishing and protective coatings. Regular maintenance and upkeep are important factors in maintaining the bright appearance and glossiness of maroon car paint.

Product Name:	P-218 Scarlet 2K	Specifications:	1L/4L/5L
Features:	Durable, anti-corrosion, anti-rust and high sun protection	Scope of application:	Cars, ships, airplanes, tanks
Color:	Support color correction		
Drying time::	surface drying time is 2 hours, actual drying time is 24 hours	Mixing ratio:	paint:curing agent:thinner=2:1:0.3
Storage method:	Store in a cool, dry, ventilated and dark place	Sales scope:	global

The quality of Maroon car repair paint is very good. Many dealers purchase it in bulk. End customers like it very much and give good feedback. In addition, the shelf life of this car paint is as long as 3-5 years. It can be stored in a light-proof, dry and ventilated warehouse at a temperature of around 25 degrees Celsius. According to feedback from buyers, they can even keep it in stock for 8 years.



#### Product performance and construction:

construction substrate:	A. Original paint layer;	B. Old car paint film;	C. Intermediate paint film; Note that the construction substrate needs to be carefully polished, the surface is dry and in good condition
Substrate treatment:	Before spraying the substrate, the substrate must be cleaned, degreased with degreaser, and polished with 800#~1000# sandpaper. Clean it after polishing, and use degreaser to remove oil again.		
Construction ratio:	Temperature 15 Color paint 100 parts MK12X quick-drying hardener agent 50 parts MK602 quick-drying thinner 15-30 parts	Temperature 15 -30 Color paint 100 parts P-12X standard hardener 50 parts P-602 standard diluent 15-30 parts	
	Temperature 30 Color paint 100 parts 12X slow drying hardener 50 parts 602 slow drying thinner 15-30 parts		
Viscosity:	16 seconds to 19 seconds, spray 4# viscosity cup (at normal temperature)		

Process::	The spraying process uses wet spraying to spray 2 to 3 layers on the surface of the substrate. Pay attention to leaving 5 to 10 minutes of evaporation time between each two layers. After spraying, the paint film needs to stand for 10 to 15 minutes. Then bake. Thickness in dry film state: 35~50 microns				
Re-construction:	After spraying, any areas with particles and sags should be wet-smoothed and polished with 2000# sandpaper after they are completely hardened.				
spray tools:	Gravity spray gun (top pot) 1.2-1.5mm 3-5kg/cm2				
	Suction spray gun (bottom) 1.4-1.6mm 3-5kg/cm2				
Use time after mixing:	After mixing the components, they need to be used within 4 hours				
Usage amount:	The thickness of a single coating is 35 microns. The paint is calculated based on a conversion rate of 70%. The theoretical value of the mixed paint spray area is: 8 square meters/liter, and the original unmixed 13 square meters/liter.				
Drying time:	ambient temperature	Non-stick time	Dry to touch time	Available assembly time	Complete drying time
	Normal temperature 25	40 minutes	2 hours	9 hours	6 days
	Bake at 70	5 minutes	10 minutes	25 minutes	50minutes
Product expiration date:	Validity period of 1-3 years, the product should be placed in a cool and dry place at 20				
Product packaging specifications:	1L×12 cans/box; 4L×4 cans/box;5L×4 cans/box				

#### Precautions:

1. Before spraying, the substrate must be degreased with a degreaser, sanded and dried.
2. If the temperature of the construction environment is high, >30°C, an appropriate amount of anti-white water can be added to the diluent.
3. After mixing each component, use it up as soon as possible and do not save it for further use.
4. After spraying, the tools should be cleaned with thinner in time.



#### Customer feedback:

"This jujube car paint has a very high color saturation, rich color and rich layers, just like a bright ruby shining in the sun. Whether in bright light or in dim environment, it can show a unique charm. Its durability is even more amazing. After long-term use and the test of various bad weather, it still maintains bright colors and a smooth surface. Compared with other brands of car paint, the quality of this product is obviously superior. It is one of the best jujube car paints we have seen on the market."

"We are very satisfied with your company's jujube car paint. Its spraying effect is extremely good, even and delicate, without any flow marks or bubbles. And the fast drying speed greatly improves our work efficiency. This high-quality product not only provides our customers with excellent car appearance, but also brings more opportunities and competitive advantages to our business."

"With It was a very pleasant experience to cooperate with Meklon. Their professional team not only provided high-quality products, but also gave us timely and effective technical support and after-sales service. During the procurement process, their communication was very smooth, and they were able to respond to our needs and provide solutions quickly. We believe that such a company will definitely achieve greater success in the automotive paint industry. "

"As an automotive paint manufacturer, your company has demonstrated extremely high professional standards and innovative capabilities. They continue to develop new products and technologies to meet market needs. This jujube red automotive paint is a good example, and its appearance provides us with more choices for procurement. We look forward to continuing to maintain a long-term cooperative relationship with Meklon and jointly exploring a broader market. "





## OUR TEAM AND FACTORY



**Guangzhou Meklon Chemical Technology Co., Ltd.**



+8613392100968



Meklonpaint@gzmeklon.com



refinishcarpaint.com

Room 1309, Tower B, Jiada International, Guangyun Road, Baiyun District, Guangzhou City, Guangdong Province