

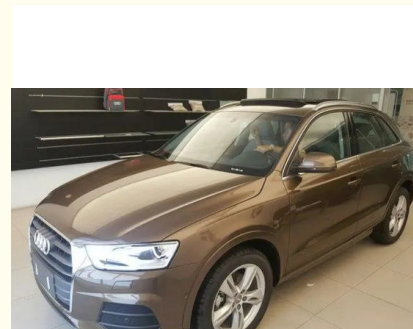


## Meklon Auto Coat Audi LZ8W Models Brown Ready Mixed Car Paint

Our Product Introduction

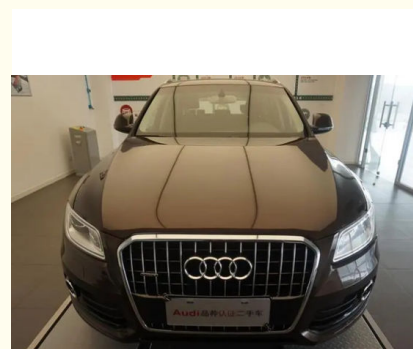
### Basic Information

- Place of Origin: China
- Brand Name: Audi
- Certification: ISO,MSDS,SGS
- Model Number: LZ8W
- Minimum Order Quantity: 200L
- Price: 2.73USD/L-5.56USD/L
- Packaging Details: Box/Carton
- Delivery Time: 10-15 Work Day
- Payment Terms: T/T
- Supply Ability: 500 boxes per day



### Product Specification

- Manufacture: Meklon
- Product Name: Audi LZ8W Brown
- Code: LZ8W
- Durability: Long-lasting
- Net Weight: 0.95KG
- Application Tool: Spray Gun
- Voc Level: Low
- Shelf Life: 1-3 Years
- Coats: 2-3
- Appearance: Liquid
- Material: Acrylic Resin
- Highlight: **Brown Ready Mixed Car Paint, Meklon Ready Mixed Car Paint**



### More Images



for more products please visit us on [refinishcarpaint.com](http://refinishcarpaint.com)

## Product Description

### Meklon Audi LZ8W Models brown Ready Mixed Car Paint

#### Manufacturer introduction:

Meklon has a professional methods team dedicated to developing and improving automotive coating formulations and manufacturing processes. The company has a modern factory equipped with advanced equipment and production lines for the production of various types of automotive coatings, which are sold in more than 30 countries around the world. It currently has 6 brands, and other brands can be customized at any time.



#### product description:

**Color characteristics:** Audi LZ8W brown car paint is a deep and full brown tone. It has a modern, elegant look that adds a sense of luxury and sophistication to the vehicle. This brown finish often gives people a warm, cozy feel.

**Scope of application:** Audi LZ8W brown car paint is usually used in different models of the Audi brand, including cars, SUVs and sports cars. It can be applied to the entire body or as a part of the body, such as doors, roof or exterior chrome trim, etc.

**Painting technology:** Audi LZ8W brown car paint is usually painted using spraying technology. Spraying technology provides an even coating and ensures smoothness and quality appearance of the paint surface.

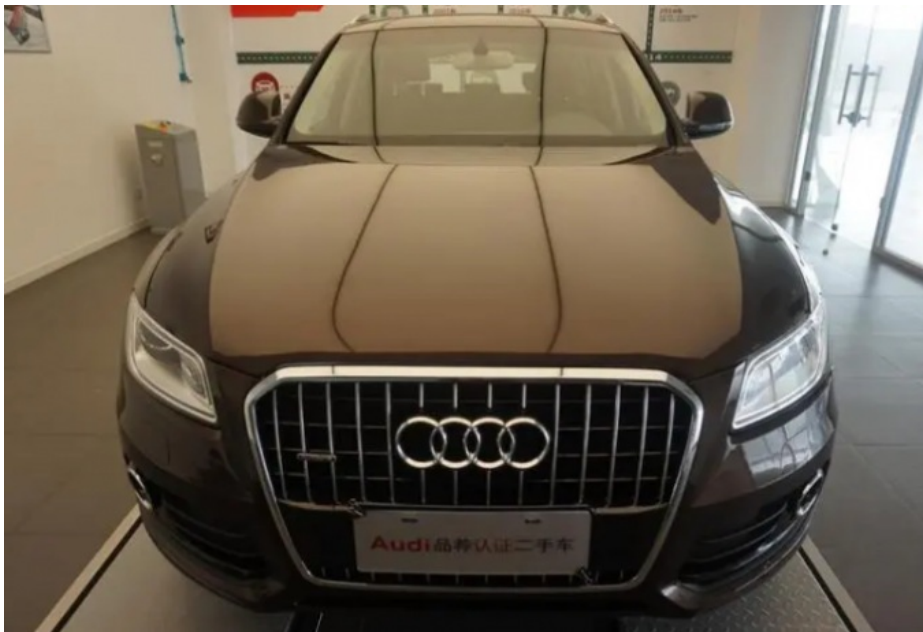
Mixed formula	
Car brand:	Audi
Applicable models:	Audi LZ8W
Color name:	Teak Brown
Year:	2017 Models
Depth:	Standard
Remark: Construction process: paint and thinner 1:1, wet spray twice, medium wet spray Twice, mist once, and varnish twice.	

Color Matching System			
Serial number	Color masterbatch number	Weight (g)	Cumulative amount (g)
Through Black	104	41.16	41.16
Transparent Iron Red	128	18.01	59.17
Young Red Pearl	308	8.36	67.53
Yellow Pearl	314	11.25	78.78
Rose Red	131	1.93	80.71
Extra Fine White Pearl	321	19.29	100
Total:100g			
Recipe weight:100g			

**Coating thickness:** Coating thickness is an important factor to pay attention to during the coating process. According to the manufacturer's recommendations, the application thickness of Audi LZ8W Brown automotive paint should meet specific specifications to obtain the best coating effect and durability.

**Glossiness:** Audi LZ8W brown car paint usually has high gloss, making the vehicle look more dazzling. Maintenance of gloss requires proper care and maintenance, such as regular car washing, waxing, and the use of UV-blocking coatings.

**Maintenance and repair:** For the maintenance and repair of Audi LZ8W brown car paint, it is recommended to use professional paint that matches the color for repair to ensure the consistency of the repair area with the surrounding paint surface.



### Preparation:

Audi LZ8W brown automotive finished paint requires some special painting techniques or equipment during the construction process.

Before painting, the car body surface must be clean and flat, and any necessary repairs and polishing work must be carried out. This helps ensure uniformity and adhesion of the paint surface.

In order to obtain the best painting results, it is usually necessary to use professional spray equipment, such as spray guns and spray systems. These devices apply paint evenly to the car body with the right pressure and spray pattern.

The construction process requires skilled technical operations, including correct spray angle, uniform coating thickness and appropriate drying time control. Skilled painting professionals ensure the best results from your Audi LZ8W brown automotive finished paint.

In order to ensure the quality of coating, construction needs to be carried out under suitable environmental conditions. This includes controlling factors such as temperature, humidity and dust to avoid adverse effects on the finish.



### Factory Tour:









Customer feedback:







**Guangzhou Meklon Chemical Technology Co., Ltd.**



+8613392100968



Meklonpaint@gzmeklon.com



refinishcarpaint.com

Room 1309, Tower B, Jiada International, Guangyun Road, Baiyun District, Guangzhou City, Guangdong Province