

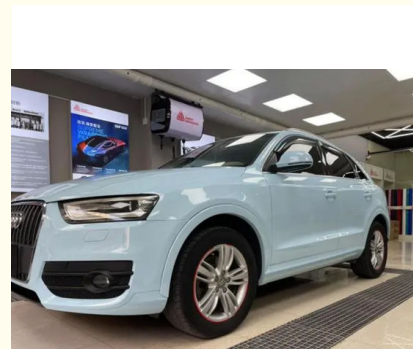


## Ready Mixed Car Paint For Audi LX5D Glacier Blue With Color Matching Coat

Our Product Introduction

### Basic Information

- Place of Origin: China
- Brand Name: Meklon
- Certification: ISO,MSDS,SGS
- Model Number: LX5D
- Minimum Order Quantity: 200Boxes
- Price: 4.64USD-6.92USD
- Packaging Details: Carton
- Delivery Time: 10-15 Work Day
- Payment Terms: T/T
- Supply Ability: 500 boxes per day



### Product Specification

- Color: Blue
- Coverage: 10-12 Sq. Ft. Per Quart
- Finish: Glossy
- Code: LX5D
- Mildew Resistance: Yes
- Scratch Resistance: Yes
- UV Resistance: Yes
- Dry Time: 30 Minutes
- Special Features: UV Resistant
- Characteristic: Strong Adhesion, High And Durable Gloss
- Voc Level: Low
- High Light: Audi Ready Mixed Car Paint
- Drying Time: 2-4 Hours
- Waterproof: Yes
- Loading Port: Hong Kong, Shekou, Huangpu, Nansha



### More Images



for more products please visit us on [refinishcarpaint.com](http://refinishcarpaint.com)

## Product Description

### Ready Mixed Car Paint For Audi LX5D Glacier Blue With Color Matching Coat

#### Manufacturer introduction:

Meklon has a professional methods team dedicated to developing and improving automotive coating formulations and manufacturing processes. The company has a modern factory equipped with advanced equipment and production lines for the production of various types of automotive coatings, which are sold in more than 30 countries around the world. It currently has 6 brands, and other brands can be customized at any time.



#### product description:

The official color code for Audi Glacier Blue is LX5D. Glacier Blue is a common color for the Audi brand and is used in the paintwork of several models. If you need to buy Audi Glacier Blue car paint or perform car refinishing work, you can try LX5D developed by Meklon.

Mixed formula	
Car brand:	Audi
Applicable models:	Audi LX5D
Color name:	Glacier Blue
Year:	2019 Models
Depth:	Standard
Remark: Construction process: paint and thinner 1:1, wet spray twice, medium wet spray Twice, mist once, and varnish twice.	

Color Matching System			
Serial number	Color masterbatch number	Weight (g)	Cumulative amount (g)
Extra Silver	401	33.91	33.91
Young Blue Pearl	311	43.15	77.06
Purple Blue	115	9.47	86.53
mussels blue	143	1.76	88.29
Through Black	104	5.37	93.66
Frost Snow Blue	103	1.85	95.51
Special White	102	2.73	98.24
Color control agent	150	1.76	100
Total:100g			
Recipe weight:100g			

**Quality:** Meklon, as a well-known automobile manufacturer, uses high-quality materials and technology in its painting process. Audi Glacier Blue car paint is generally of excellent quality and durability, resisting scratches, scuffs and fading from daily use.

**Painting Techniques:** Using proper techniques and methods during the painting process is critical to the durability of the paint finish. Meklon uses advanced coating technology in its production process to ensure uniformity, adhesion and durability of the paint surface.

**Care and Maintenance:** Proper care and maintenance are essential to maintaining the durability of your Audi Glacier Blue paint finish. Washing, waxing and keeping your vehicle clean regularly can reduce the damage to your paintwork from dirt, acid rain, UV rays and other factors. Also, avoid using harsh cleaners and brushes that can scratch the paint.

**Environmental factors:** Environmental factors such as sunlight, extreme temperatures, chemicals, and acid rain can all have an impact on paint durability. Keeping your vehicle parked in the shade, avoiding prolonged exposure to extreme temperatures, and avoiding exposure to harmful chemicals can prolong the durability of your paintwork.



### Our advantage

**Self-developed formula:** We have self-developed formula, which can provide a variety of automotive paint products with different characteristics according to different needs of customers. Our formulations have been experimented with and rigorously tested to ensure automotive paint quality in terms of durability, color stability and environmental friendliness.

**Professional team testing:** We have an experienced professional team that can conduct comprehensive testing and evaluation of automotive paint products. Our team has advanced testing equipment and technology, which can ensure that every batch of car paint products we produce meets high-standard quality requirements.

**Environmental protection:** Our automotive paint products are produced with environmentally friendly materials, which meet international environmental protection standards and can effectively reduce environmental pollution. We are committed to producing high-quality, environmentally friendly automotive paint products to help customers achieve sustainable development.

**High-quality after-sales service:** We provide high-quality after-sales service, which can solve problems and difficulties encountered by customers in a timely manner. Our customer service team has the experience and expertise to provide the technical support and advice our customers need.



**Guangzhou Meklon Chemical Technology Co., Ltd.**



+8613392100968



Meklonpaint@gzmeklon.com



refinishcarpaint.com

Room 1309, Tower B, Jiada International, Guangyun Road, Baiyun District, Guangzhou City, Guangdong Province