

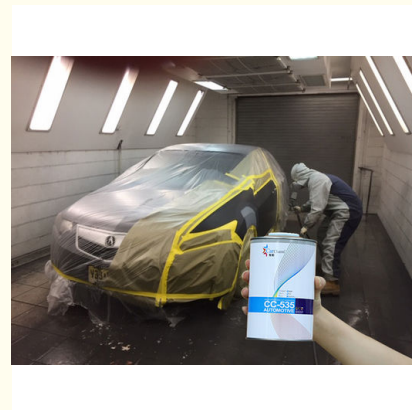
## 2K Pure Black Refinish Car Paint 4L Low Voc Deep Black Effect Of P-237

Our Product Introduction

for more products please visit us on [refinishcarpaint.com](http://refinishcarpaint.com)

### Basic Information

- Place of Origin: China
- Brand Name: Meklon
- Certification: ISO,MSDS,SGS
- Model Number: C-237
- Minimum Order Quantity: 200L
- Price: 2.73USD/L-5.56USD/L
- Packaging Details: Box/Carton
- Delivery Time: 10-15 Work Day
- Payment Terms: T/T
- Supply Ability: 200L per day



### Product Specification

- Brand: CarCharm
- Code: L-237
- Product Name: 2K Pure Black
- Highlight: 4L Pure Black Car Paint, Low Voc Pure Black Car Paint, 2K Pure Black Car Paint



### More Images



## Product Description

### 2K Pure Black Refinish Car Paint 4L Low Voc Deep Black Effect Of P-237

Product Name:	P-237 2K Pure Black	Specifications:	1L/4L/5L
Features:	high covering power, high temperature resistance	Scope of application:	Cars, ships, vehicle, tanks
Color:	Pure Black	Voc:	Low
Storage method:	Store in a cool, dry, ventilated and dark place	Sales scope:	global
Drying time:	surface drying time is 2 hours, actual drying time is 24 hours	Mixing ratio:	paint:curing agent:thinner=2:1:0.3
Substrate treatment:	Before spraying the substrate, the substrate must be cleaned, degreased with degreaser, and polished with 800#~1000# sandpaper. Clean it after polishing, and use degreaser to remove oil again.		
Process:	The spraying process uses wet spraying to spray 2 to 3 layers on the surface of the substrate. Pay attention to leaving 5 to 10 minutes of evaporation time between each two layers. After spraying, the paint film needs to stand for 10 to 15 minutes. Then bake. Thickness in dry film state: 35~50 microns		

## Product Description

Meklon's C-237 2K Pure Black Paint is renowned for its high concentration of black pigments, which deliver a rich, deep black finish that is highly sought after in the automotive industry. The term "color concentration" refers to the amount of pigment present in the paint, which directly influences the intensity and saturation of the color applied to the vehicle.

The Impact of Color Concentration:

In the case of pure black car paint, a higher color concentration typically results in a more profound and vivid black appearance. The measurement of color concentration can be expressed in either volume or mass percentages, depending on the standard being followed.

Mass Concentration in Automotive Paint:

Within the automotive sector, mass concentration is a commonly used measurement. For instance, the color concentration of pure black paint might be specified as a mass percentage, such as 10% or 20%. This indicates the proportion of pure black pigment added to the base paint to achieve the desired color depth.

Balancing Color Concentration for Optimal Results:

While a higher color concentration can enhance the visual impact of the paint, it's important to note that an excessive concentration can lead to issues such as uneven application, poor leveling, or an overly thick coat, which may compromise the finish's quality and longevity.

Selecting the Right Color Concentration:

The ideal color concentration for pure black paint depends on various factors, including the painter's preferences, the specific vehicle, and the application's requirements. It's advisable to consult with your automotive painter to determine the most suitable color concentration for your particular project.

Expert Advice for Perfect Coating:

Meklon is committed to providing not only high-quality paints but also expert guidance to ensure that you achieve the perfect finish. Our team is available to discuss your needs and help you select the optimal color concentration for your pure black paint application.

## Preparation for spray paint:

Safety First:

Before you begin, ensure that your workspace is adequately ventilated to protect against fumes. Equip yourself with the necessary personal protective gear, including a respirator to safeguard your respiratory system, gloves to protect your hands, and goggles to shield your eyes.

Gathering Essential Materials and Tools:

Prepare a comprehensive kit of materials and tools to facilitate a smooth painting process. Your essentials should include:

Pure Black Paint: The foundation of your project.

Thinner: Necessary for achieving the correct consistency.

Stir Stick: For mixing the paint and thinner thoroughly.

Weighing Equipment: To accurately measure the components.

Spray Gun: For a professional, even application.

Cleaning Supplies: To maintain cleanliness and ensure the longevity of your tools.

## Mixing and blending:

Accurately Mixing Meklon's Pure Black Paint for Optimal Results

Calculating the Mixing Ratio:

Begin by referencing the detailed recipe or instructions provided by Meklon for the specific pure black paint product. The mixing ratio will typically be specified in terms of volume or mass percentages, which are critical for achieving the desired color concentration and consistency.

Measuring and Pouring the Paint:

Carefully measure out the required amount of pure black paint using precision weighing equipment. Pour this accurately determined quantity into a clean mixing container, ensuring that the paint is free from any contaminants.

Adding the Diluent with Precision:

Next, adhere to the prescribed recipe to determine the correct amount of diluent (thinner) needed. Gradually add the diluent, exercising caution to maintain the optimal color concentration. Over-dilution or under-dilution can adversely affect the paint's application properties and final appearance.

Thorough Mixing for Uniformity:

Employ a high-quality stir stick to blend the paint and diluent together. Vigorous and consistent stirring is essential to ensure that the pigment is evenly dispersed throughout the mixture. This step is crucial for achieving a smooth, professional finish when applying the paint with a spray gun.

Expert Techniques for Professional Outcomes:

Meklon's commitment to excellence extends to providing precise mixing instructions and expert tips to achieve the best results. Our goal is to ensure that every automotive refinishing project meets the highest standards of quality and durability.

### **Preparation for spraying:**

Preparing and Protecting Surfaces for Spray Application

Surface Preparation:

Ensure that the surfaces to be painted are meticulously cleaned and properly prepared. This involves removing any oil, dust, or contaminants to achieve a smooth, pristine surface. Utilize suitable cleaning agents and fine-grit sandpaper to thoroughly prepare the area, ensuring optimal adhesion and a flawless finish.

Protective Measures:

Before commencing the spraying process, take the necessary precautions to shield the surrounding areas. Apply masking materials to prevent any overspray or accidental paint contamination, safeguarding the integrity of adjacent surfaces and maintaining a clean work environment.

Expert Guidance for Optimal Results:

Meklon is dedicated to providing comprehensive guidance on surface preparation and protection, ensuring that your painting projects achieve the highest level of quality and professionalism.

### **Factory Tour:**



Effect picture:





**Guangzhou Meklon Chemical Technology Co., Ltd.**



+8613392100968



Meklonpaint@gzmeklon.com



refinishcarpaint.com

Room 1309, Tower B, Jiada International, Guangyun Road, Baiyun District, Guangzhou City, Guangdong Province