



Protect Your Car With 2K Orange Car Paint Top Coat For Enhanced Color And Protection

Our Product Introduction

for more products please visit us on refinishcarpaint.com

Basic Information

- Place of Origin: China
- Brand Name: PORSHICHE
- Certification: ISO,MSDS,SGS
- Model Number: Orange Red
- Minimum Order Quantity: 200L
- Price: 2.73USD/L-5.56USD/L
- Packaging Details: Box/Carton
- Delivery Time: 10-15 Work Day
- Payment Terms: T/T
- Supply Ability: 500L per day

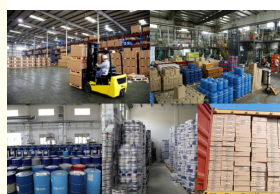
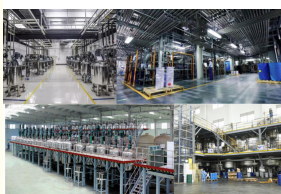


Product Specification

- Name: Blue
- Code: 208
- Voc Level: Low
- Net Weight: 0.95KG
- Heat Resistance: Yes
- Protection: UV-resistant
- Sheen: High Gloss
- Uv Resistance: Yes
- Material: Acrylic
- Application Method: Brush, Roller, Or Spray
- Adhesion: Strong
- High Light: 1K Basecoat
- Highlight: Enhanced Protection Car Paint Top Coat,
2K Orange Car Paint Top Coat,
Enhanced Color Car Paint Top Coat



More Images



Product Description

Product details:

parameter	Details
Mixing ratio	Component A: Component B = 2:1 (approximate ratio)
Solid content	About 60%-80% (varies with different products)
Viscosity (coating - 4 cups, 25°C)	15-30 seconds (the amount of diluent can be adjusted according to construction requirements)
Drying time	Natural drying > 24 hours; drying (60°C) about 30 minutes - 1 hour
hardness	≥H (pencil hardness)
Weather resistance	Good, long-lasting color and gloss
Adhesion	≤1 level (cross-cut test)



2K orange car paint is a two-component car paint. Here is an introduction to it and some common

Components: 1. Mainly resin, which provides the basic film-forming substance for the paint film and determines the basic properties of the paint, such as adhesion and glossiness. 2. Curing agent, which reacts chemically with the resin of component A to enable the paint to solidify into a film, thus having good hardness, wear resistance and weather resistance.

Performance characteristics:

Good color expression: presents a bright, bright and highly saturated orange color, which is bright and long-lasting, making the vehicle more visually eye-catching.

High hardness: The cured paint film has a high hardness and can effectively resist minor scratches and wear in daily use, protecting the surface of the car body.

Good gloss: It can make the surface of the car body have a smooth and bright appearance, improving the overall beauty of the vehicle.

Excellent weather resistance: It can withstand the test of natural factors such as ultraviolet rays, temperature changes, humidity, etc., and is not easy to fade, yellow, crack, etc., and maintains long-lasting color and gloss.

Good adhesion: It can be firmly attached to the surface of the car body and is not easy to peel or bubble.

Construction requirements:

Mixing ratio: Component A and Component B of Meklon 2K orange car paint need to be mixed in a certain ratio of 2:1

Construction environment: The construction environment should be kept clean and dry, with a suitable temperature (between 15 -30) and moderate humidity. During the construction process, good ventilation conditions should be ensured to facilitate the drying and curing of the paint, and dust, impurities, etc. should be avoided to affect the paint surface.

Spray gun parameters: The caliber of the spray gun is generally selected between 1.3mm-1.8mm, and the spraying pressure is adjusted according to the spray gun model and the characteristics of the paint to ensure that the paint can be evenly sprayed on the surface of the car body.

Drying time: The natural drying time is relatively long, and it takes more than 24 hours to completely dry; if the drying method is used, the baking time is about 30 minutes to 1 hour at a temperature of about 60 .

Safety precautions: The ingredients in 2K orange car paint may cause harm to human health. Protective equipment such as protective gloves, masks, goggles, etc. should be worn during construction to avoid contact between the paint and the skin, eyes and respiratory tract.



Product quality advantages:

High color accuracy: It can provide accurate color matching, and the repaired paint surface has almost no color difference with the original blue of the car, making the vehicle appearance repair effect more perfect, which can improve customer satisfaction, bring good reputation and more repeat customers to dealers.

Strong covering power: It can effectively cover various defects, scratches and old paint layers on the surface of the car, reduce the number of construction layers and the amount of paint used, and save construction time and cost.

Excellent paint film performance: It has high hardness, wear resistance and weather resistance. High hardness can make the paint surface not easy to be scratched in daily use; good wear resistance can withstand long-term friction and wear; good weather resistance ensures that the paint surface is not easy to fade, discolor and crack under different climatic conditions, extending the service life of the paint surface and reducing customer complaints and repairs due to paint quality problems.

Rich product line and technical support:

Rich product line: In addition to 2K blue topcoat, other colors of automotive repair paint and supporting products such as curing agent, thinner, etc. may also be provided to meet the dealer's one-stop procurement needs and facilitate their inventory management and sales.

Strong technical support: The factory can provide professional technical training and consulting services for dealers, helping dealers' employees and customers master the correct construction methods, color matching skills and problem-solving methods, improve construction quality and efficiency, and reduce losses caused by improper construction.



Supply and logistics guarantee:

Stable supply: The factory has strong production capacity and inventory management capabilities, which can ensure timely and sufficient supply of dealers' orders, avoiding customer loss and business losses caused by out-of-stock.

Convenient logistics services: Cooperate with professional logistics companies to provide fast and safe logistics services to ensure that products can be delivered to dealers in time, reducing the time and cost of logistics links.

Profit margin advantage:

Competitive price: The factory will give dealers a reasonable price policy so that dealers can obtain a higher profit margin when selling products. At the same time, high-quality product quality and a good brand image will also help dealers increase the selling price of products and further increase profits.

Cost control advantage: The product's efficient construction performance and good covering power can reduce paint waste and labor consumption during the construction process, help dealers reduce construction costs, and improve overall profit levels.



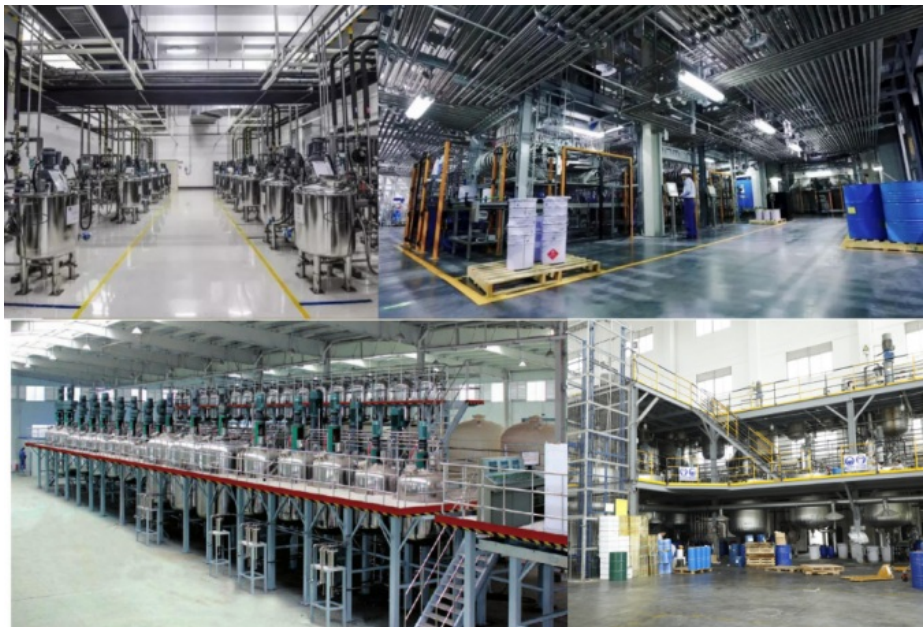
Manufacturer introduction:

In the vast world of automotive paint, Meklon has become a shining star in the industry with its excellent quality and innovative spirit. Since its establishment in 2010, we are about to usher in a glorious 15th anniversary.



Looking back, we started from a small processing plant, with our love and persistence in the automotive paint industry, and continued to grow step by step. Today, we have a huge raw material supply system, high-quality canning production lines and efficient production workshops, forming a complete set of production series. The total area of the company reaches more than 3,000 square meters, providing sufficient space for our production and R&D.





We are proud that we have a strong team of more than 200 professional workers. They are skilled and experienced, and with a high sense of responsibility and professionalism, they ensure that every production process is refined. At the same time, we have more than 10 experienced R&D engineers who keep up with the development trend of the industry, constantly explore and innovate, and are committed to providing customers with better quality, more environmentally friendly and more competitive automotive paint products.

It is worth mentioning that our company has also hired 2 paint mixing masters from PPG, the world's top automotive paint company. With their deep professional knowledge and rich practical experience, they check the color of our products to ensure that the color of each car paint is accurate and bright.



In our product series, 1K bright red car paint is particularly prominent. This car paint uses high-quality raw materials, and after a strict production process and a fine color mixing process, it presents a stunning bright red color. It has excellent hiding power, durability and gloss, which can give the car a unique charm and personality. Whether it is used for car repair or whole vehicle spraying, 1K bright red car paint can show excellent performance and make your car look brand new.



Guangzhou Meklon Chemical Technology Co., Ltd.



+8613392100968



Meklonpaint@gzmeklon.com



refinishcarpaint.com

Room 1309, Tower B, Jiada International, Guangyun Road, Baiyun District, Guangzhou City, Guangdong Province