



Premium 1K Blue Pearl Acrylic Car Paint for Mercedes-Benz DB366 Eco-Friendly Waterborne Formula

Our Product Introduction

Basic Information

- Place of Origin: GUANGDONG CHIAN
- Brand Name: Benz
- Certification: ISO,MSDS,SGS
- Model Number: Blue pearl
- Minimum Order Quantity: 50L
- Price: 2.73USD/L-5.56USD/L
- Packaging Details: can/Cartron
- Delivery Time: 10-15 Work Day
- Payment Terms: L/C, T/T
- Supply Ability: 500 boxes per day



Product Specification

- Coats: 2-3
- Type: Paint
- Code: C-315
- High Light: Ready Mixed Car Paint
- Fade Resistant: Yes
- Model: K23 Moonlight Silver
- Net Weight: 0.95KG
- Scratch Resistance: Yes
- Drying Time: 1 Hour
- Main Raw Materials: Resine, Solvent, Pigment, LPG
- Package: Can/carton
- Safety Features: Non-toxic, Non-flammable
- Storage: Store In A Cool, Dry Place
- Highlight: **1K Blue Pearl Acrylic Car Paint,**
1K Acrylic Car Paint,
Mercedes-Benz Acrylic Car Paint



More Images

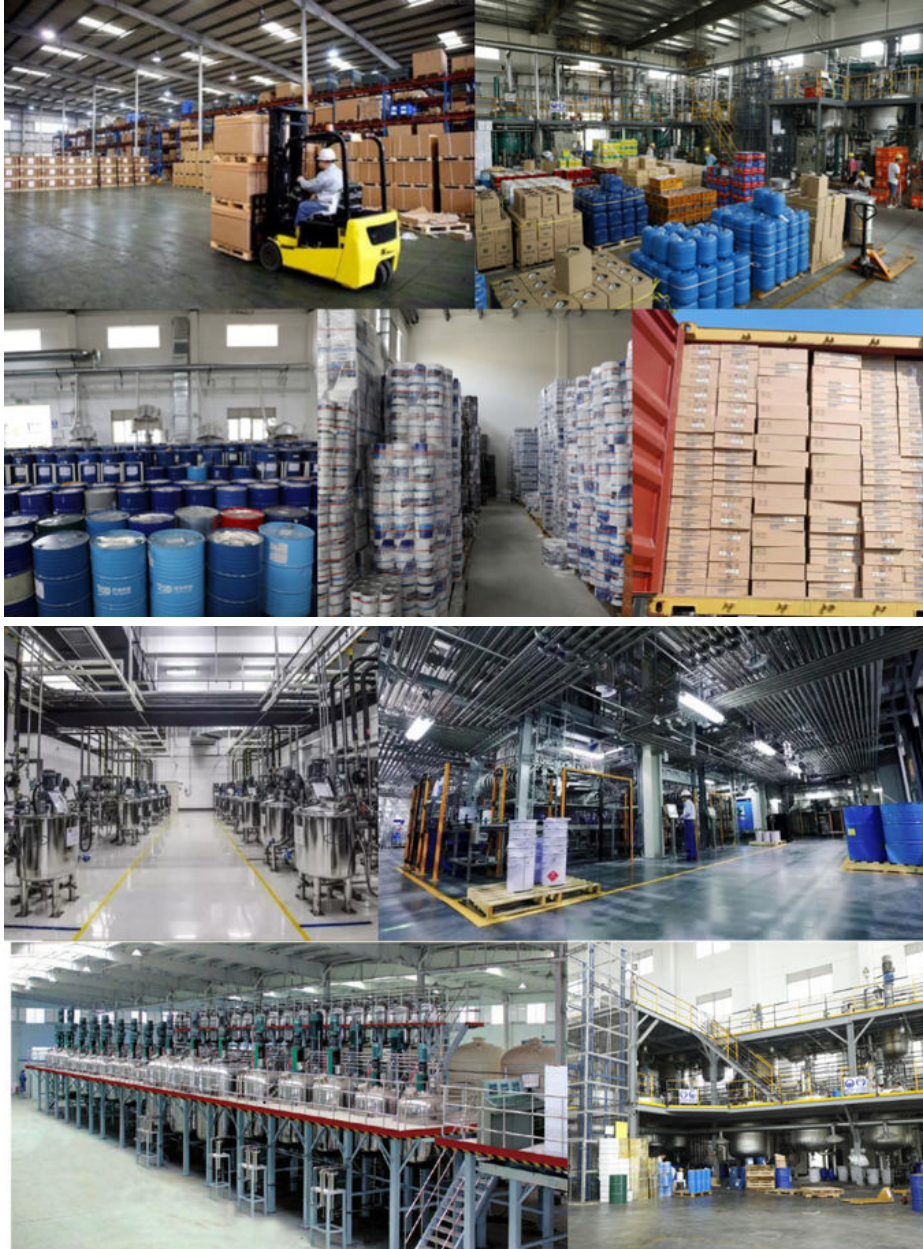


for more products please visit us on refinishcarpaint.com

Product Description

Manufacture introduction

Meklon is a direct-manufacturing factory specializing in automotive repair materials, leveraging 20 years of industry expertise. Our 3,000 facility houses internationally advanced production lines and an in-house R&D team, enabling end-to-end control from raw material procurement to finished product delivery. Certified by ISO 9001 (quality management) and ISO 14001 (environmental management), we guarantee factory-direct quality assurance with eco-friendly production processes. Our vertically integrated supply chain, rigorous raw material screening, and standardized quality inspection system ensure consistent supply of high-performance products at competitive prices.

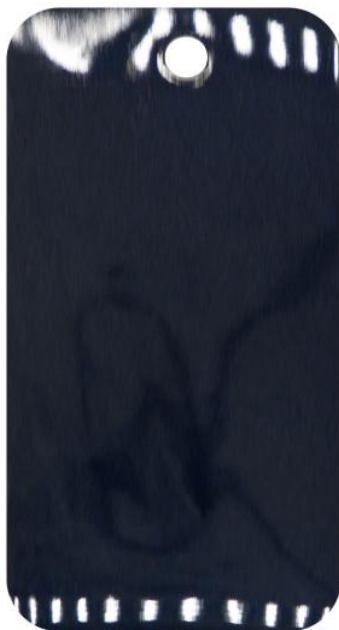


Prodcut description

Discover the ultimate automotive painting solution with our Premium 1K Blue Pearl Acrylic Car Paint, specifically formulated for Mercedes-Benz DB366. This high-performance paint combines cutting-edge 1K technology with luxurious blue pearl effect pigments, delivering a stunning, multi-dimensional finish that enhances the vehicle's appearance under any lighting condition.

Engineered for professional automotive refinish applications, our paint ensures factory-precise color matching to maintain the original factory aesthetics of your Mercedes-Benz DB366. The advanced acrylic resin base provides exceptional durability, resistance to UV fading, scratches, and harsh weather conditions, ensuring a long-lasting, showroom-quality finish.

What sets our product apart is its eco-friendly waterborne formula, which significantly reduces volatile organic compounds (VOCs) while maintaining superior performance. This environmentally responsible approach makes it an ideal choice for eco-conscious consumers and professional body shops alike.



Mercedes-Benz 366	
Toner	Gram
104	34.8
310	30.64
402	1.23
115	14.7
131	8.09
119	3.92
313	4.9
150	0.49
103	1.23
•	100



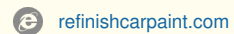
Why us?

1. Competitive price with good quality;
2. Very good package, store products better in your country;
3. We have over 26 years experience, support you professional technical;
4. Fast delivery time, let you get products quickly after make order;
5. Reliable Manufacturer because our products quality approved by over 800 customers.

OUR TEAM FEEDBACK WITH CUSTOMERS



The collage features a row of paint cans on the left, including brands like PPG, Paraflex, and others. The right side is a hexagonal grid of photos showing people using the products, smiling, and interacting with the team.



Room 1309, Tower B, Jiada International, Guangyun Road, Baiyun District, Guangzhou City, Guangdong Province