



## Color Shifting Red Green Pearl Acrylic Paint Automotive Coating & Car Repair Paint

Our Product Introduction

for more products please visit us on [refinishcarpaint.com](http://refinishcarpaint.com)

### Basic Information

- Place of Origin: CHINA
- Brand Name: Car Charm
- Certification: ISO,MSDS,SGS
- Model Number: X07
- Minimum Order Quantity: 50L
- Price: 3USD/L-5USD/L
- Packaging Details: Carton, Iron canister
- Delivery Time: 10-15 Work Day
- Payment Terms: T/T
- Supply Ability: 500 boxes -1000 boxes per day



### Product Specification

- Gloss Retention: High
- Heat Resistance: Yes
- Fade Resistant: Yes
- Uv Resistant: Yes
- Color Scheme Positioning: Modern Sense Of Technology
- Factory Attributes: Customizable
- Application Method: Spray
- Curing Time: 24 Hours
- Package: Carton
- Specification: 1Lx12
- Application: Spray
- Uv Protection: Yes
- Storage: Cool And Dry Place
- Mixing Ratio: 2:1
- Scratch Resistance: High



### More Images



## Product Description

### Color Shifting Red Green Pearl Acrylic Paint Automotive Coating & Car Repair Paint

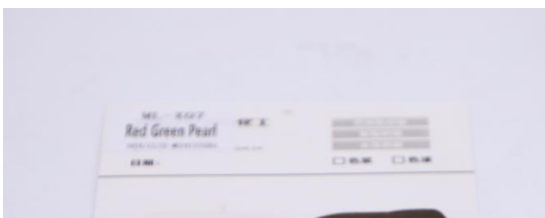
Premium Acrylic Red Green Pearl Car Refinish Paint. Features stunning red-green color-shifting chameleon luster, excellent weather UV resistance and strong adhesion. Fine particle dispersion, great leveling and fast drying for auto repair and full car renovation. Low VOC, eco-friendly and complies with international standards.

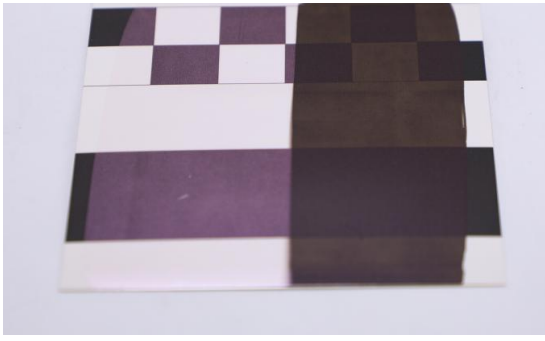
- Premium acrylic base: Outstanding weather, UV and chemical resistance, strong adhesion, no fading, cracking or peeling.
- Red Green Pearl effect: Unique color-shifting red-green dual-tone, stunning multi-angle chameleon luster, eye-catching and luxurious metallic texture.
- Superior durability: High film hardness and toughness, scratch & wear resistant, long-lasting vivid color and mirror gloss.
- Easy application: Excellent leveling, fine particle dispersion, fast drying, perfect for partial repair and full car refinishing.
- Low VOC eco-friendly: Meets global automotive environmental standards, safe for professional spray construction.



### Product Specifications

Paint Film Property	Scratch-resistant
HS Code	320820
Level	High
Certification	ISO4001, ISO9001, ISO16949
Substrate	Acrylic
Components	Pigment
Formation Mechanism	Non Conversion Type
Transport Package	Carton Box
Shelf life	3-5years
MOQ	50L
Carton Specification	45*33.5*13.8
Delivery	By sea





## Key Performance Features

### Excellent Adhesion

Ensures corrosion-resistant, long-lasting finishes on car surfaces while minimizing rework in collision repair applications.

### Strong Covering Power

High-performance automotive paint with primer-ready formula achieves flawless adhesion and durability on pre-treated metal surfaces using compatible epoxy primers.

### High Chroma Color

Ultra-high chroma automotive paint with Pantone®-validated color intensity delivers vibrant, fade-resistant finishes for custom cars and luxury restorations (ISO 105-A05 xenon test certified).

## Manufacturer Advantages

### Guangzhou Meklon Chemical Technology Co., Ltd

Guangzhou MEKLON Chemical Technology Co., Ltd. is a leading automotive chemical manufacturer specializing in paints, primers, and additives. With over 15 years of experience, it operates a 60,000 m<sup>2</sup> facility, adhering to ISO9001 and ISO14001 standards. The company provides high-quality, low VOC products and supports distributors with color formula software, mixing machines, and training.

- **Expert Engineering:** Our R&D team has developed unique advantages for red and green pearls including strong sparkle, high gloss, quality construction, and high temperature resistance
- **Global Reach:** Sales network covers more more than 65 countries with over 1,500 customers in China
- **Industry Partnerships:** Established relationships with well-known automobile manufacturers, shipbuilding, and machinery manufacturers
- **Professional Support:** Comprehensive technical support and timely after-sales service from order placement through completion
- **Custom Solutions:** Customized options available for special colors and effects to meet individual customer requirements

## The multi-dimensional manifestation of technical professionalism

2. **Resin and Curing System:** The technical team of the company has a profound understanding of the cross-linking reaction mechanism of acrylic resin and isocyanate curing agent. They can precisely control the drying speed of the paint film, as well as the balance between final hardness and flexibility. According to different climate regions, they have developed special formulations that are suitable for high humidity and heat, cold regions, and strong ultraviolet environments.
3. **Color Development Capability:** Leveraging a rich color master system and a professional color matching database, the company is able to quickly match the original factory colors of various vehicle models, meeting the strict color accuracy requirements of the repair market.
4. **Safety and Compliance Assurance:** All products are accurately classified in accordance with the United Nations GHS system and Chinese national standards (GB 30000 series). They come with complete safety data sheets (SDS) and compliant labels that meet the requirements of GB/T 16483 and GB 15258. During the transportation process, strict compliance with international dangerous goods regulations such as UN1263 (Class 3 Flammable Liquids) is followed. Each batch of exported products is entrusted to an authoritative institution to obtain the "Cargo Transportation Condition Appraisal Certificate" to ensure full chain safety and compliance from production to delivery.





## FAQ

### Q:

#### Severe Color Shift & Uneven Iridescent Effect

### A:Causes

Red Green Pearl contains special interference pigments that change color with viewing angle; these heavy pigments settle extremely fast.

Insufficient stirring causes uneven pigment distribution, leading to patchy red-green iridescence.

Minor variations in gun distance, speed or coat thickness create obvious bright/dark and color difference between areas.

### Solutions

Stir thoroughly for 3–5 minutes before use and stir frequently during spraying.

Apply 2–3 thin, uniform coats with consistent gun speed and 15–20cm distance.

Use medium-drying thinner; never use ultra-fast-drying thinner which disrupts pigment alignment.



**Guangzhou Meklon Chemical Technology Co., Ltd.**



+8613392100968



Meklonpaint@gzmeklon.com



refinishcarpaint.com

Room 1309, Tower B, Jiada International, Guangyun Road, Baiyun District, Guangzhou City, Guangdong Province