



## Refinish Car Paint Expert Automotive Coatings Providing Smooth Application And Excellent Resistance To Environmental Wear

Our Product Introduction

for more products please visit us on [refinishcarpaint.com](http://refinishcarpaint.com)

### Basic Information

- Place of Origin: CHINA
- Brand Name: Mei Guan Da
- Certification: ISO,MSDS,SGS
- Model Number: 312
- Minimum Order Quantity: 50L
- Price: 2.73USD-5.56USD
- Packaging Details: Carton- Iron canister
- Delivery Time: 7~14 working days
- Payment Terms: T/T
- Supply Ability: 500 boxes per day

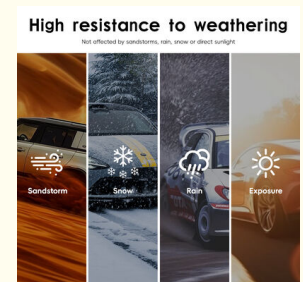
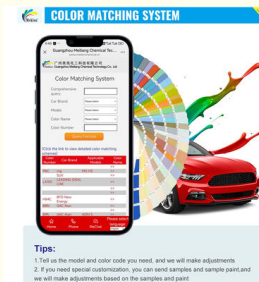


### Product Specification

- Gloss Retention: High
- Basetype: Acrylic
- Manufacturer Location: China
- Dryingtime: 15-30 Minutes To Touch Dry
- Color Formula App: Meklonpaintmix
- Finish: Glossy / Matte / Satin
- Wholesale: Yes
- Covering Strength: Excellent
- Scratch Resistant: Yes
- Service: OEM/ODM
- Uv Protection: Provides Protection Against UV Rays
- Hardenerrequired: Yes / No (depending On Product)
- Type: Automotive Refinish Paint
- Highlight: Refinish car paint with smooth application, Automotive coatings resistant to environmental wear



### More Images



## Product Description

### Refinish Car Paint Expert Automotive Coatings Providing Smooth Application And Excellent Resistance To Environmental Wear

312 Green Pearl is a premium 1K acrylic pearl basecoat tinter benchmarked against global top brands. With evenly dispersed ultra-fine pearl particles and 50%-80% high-solid acrylic formula, it delivers a luminous layered finish, excellent pearl orientation and long-term weather resistance.

Manufactured in our 60,000 ISO-certified factory, we provide competitive factory pricing, flexible MOQs, full OEM/ODM support and 7-14 days worldwide delivery.

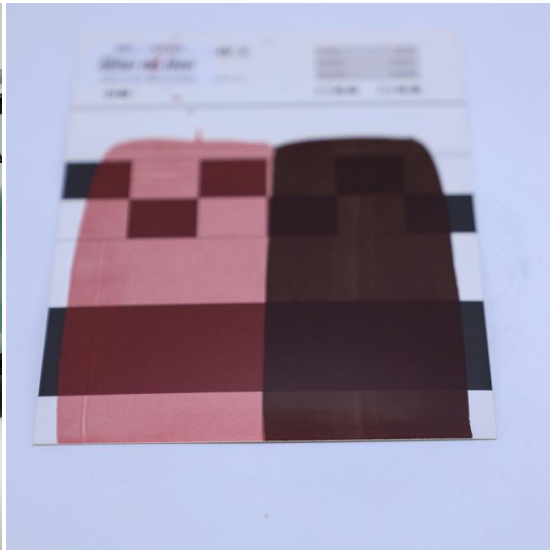
### Features & Advantages

- Delicate Green Pearl Effect: Adds depth and premium texture for refined finishes.
- High Solid Acrylic Formula: Ensures excellent pearl orientation and long-term durability.
- 99.9% Batch Consistency: Uniform pearl dispersion for consistent color accuracy.
- Wide Compatibility: Works seamlessly with various basecoat and clear coat systems.
- Customization Support: Full OEM/ODM services available for large orders.



### Product Specifications

Paint Film Property	Scratch-resistant
HS Code	320820
Level	High
Certification	ISO4001, ISO9001, ISO16949
Substrate	Acrylic
Components	Pigment
Formation Mechanism	Non Conversion Type
Transport Package	Carton Box
Shelf life	3-5years
MOQ	50L
Carton Specification	45*33.5*13.8
Delivery	By sea



## Key Performance Features

---

### Excellent Adhesion

Ensures corrosion-resistant, long-lasting finishes on car surfaces while minimizing rework in collision repair applications.

### Strong Covering Power

High-performance automotive paint with primer-ready formula achieves flawless adhesion and durability on pre-treated metal surfaces using compatible epoxy primers.

### High Chroma Color

Ultra-high chroma automotive paint with Pantone®-validated color intensity delivers vibrant, fade-resistant finishes for custom cars and luxury restorations (ISO 105-A05 xenon test certified).

## Manufacturer Advantages

---

### Guangzhou Meklon Chemical Technology Co., Ltd

Guangzhou MEKLON Chemical Technology Co., Ltd. is a leading automotive chemical manufacturer specializing in paints, primers, and additives. With over 15 years of experience, it operates a 60,000 m<sup>2</sup> facility, adhering to ISO9001 and ISO14001 standards. The company provides high-quality, low VOC products and supports distributors with color formula software, mixing machines, and training.



**Global Reach:** Sales network covers more more than 65 countries with over 1,500 customers in China

**Industry Partnerships:** Established relationships with well-known automobile manufacturers, shipbuilding, and machinery manufacturers

**Professional Support:** Comprehensive technical support and timely after-sales service from order placement through completion

**Custom Solutions:** Customized options available for special colors and effects to meet individual customer requirements

### **The multi-dimensional manifestation of technical professionalism**

---

- **Resin and Curing System:** The technical team of the company has a profound understanding of the cross-linking reaction mechanism of acrylic resin and isocyanate curing agent. They can precisely control the drying speed of the paint film, as well as the balance between final hardness and flexibility. According to different climate regions, they have developed special formulations that are suitable for high humidity and heat, cold regions, and strong ultraviolet environments.
- **Color Development Capability:** Leveraging a rich color master system and a professional color matching database, the company is able to quickly match the original factory colors of various vehicle models, meeting the strict color accuracy requirements of the repair market.
- **Safety and Compliance Assurance:** All products are accurately classified in accordance with the United Nations GHS system and Chinese national standards (GB 30000 series). They come with complete safety data sheets (SDS) and compliant labels that meet the requirements of GB/T 16483 and GB 15258. During the transportation process, strict compliance with international dangerous goods regulations such as UN1263 (Class 3 Flammable Liquids) is followed. Each batch of exported products is entrusted to an authoritative institution to obtain the "Cargo Transportation Condition Appraisal Certificate" to ensure full chain safety and compliance from production to delivery.





## FAQ

### Q1: What are the color characteristics of 312 Green Pearl?

A: 312 Green Pearl is a 1K metallic pearl basecoat tinter from our color pearl tinter series. It has a pure green base infused with fine pearl particles. Under light illumination, the pearl particles present a soft, layered sparkling effect, adding depth and texture to the green finish. It is widely used for automotive refinishing, custom paint jobs and decorative coating applications.

### Q2: What is the product formula and its corresponding performance advantages?

A: This 1K tinter uses a high-solid acrylic formula with strictly controlled component ratios:

- 50%-80% acrylic resin: ensures excellent pearl flake orientation, strong adhesion and UV weatherability, supporting long-term coating durability
- 2%-30% pigment and pearl particles: delivers strong tinting power and uniform sparkling effect with stable batch consistency
- 5%-15% xylene, 5%-15% PMA, 10%-25% butyl acetate: balanced solvent system ensures good leveling, fast flash-off and wide construction window

### Q3: How does its quality compare to international top brands?

A: Our 312 Green Pearl is strictly developed according to PPG and Yatu 1K basecoat standards. It matches their performance in pearl luster, flake orientation, color stability and weather resistance, offering a cost-effective alternative to imported products.



**Guangzhou Meklon Chemical Technology Co., Ltd.**

+8613392100968

Meklonpaint@gzmeklon.com

refinishcarpaint.com

Room 1309, Tower B, Jiada International, Guangyun Road, Baiyun District, Guangzhou City, Guangdong

